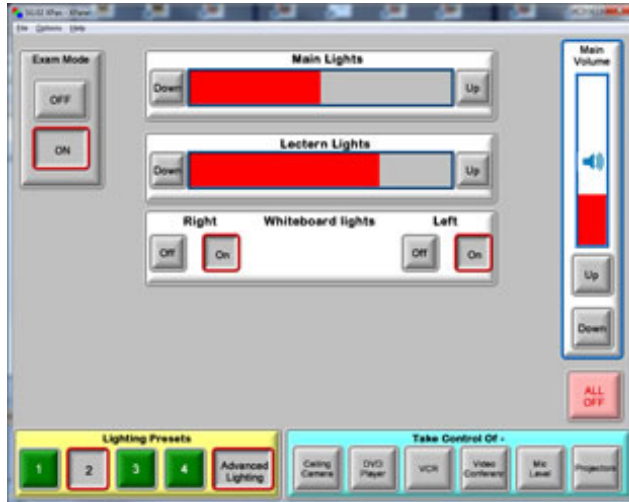


# Lighting

26



## Touch Screen

Lighting should be available on the bottom, left corner of all pages, with audio on the right hand side. The default lighting is normally number 3, but you can also enter advanced lighting to change the intensity of the lights.

## Key Points

The lights have motion sensors that will turn off after 10 minutes of inaction. The green presets are the default setting, but can be fine tuned with the advanced lighting:

- If there is no movement in the room the lights may turn off. To prevent this, turn on exam mode, to lock the lights on. Remember to turn All Off at the end of your lecture.
- Panopto needs good lighting so keep main and lectern lights fairly high.
- If you are video conferencing and the far end see a silhouette, turn off the whiteboard lights, ensure the lectern lights are at 100%.