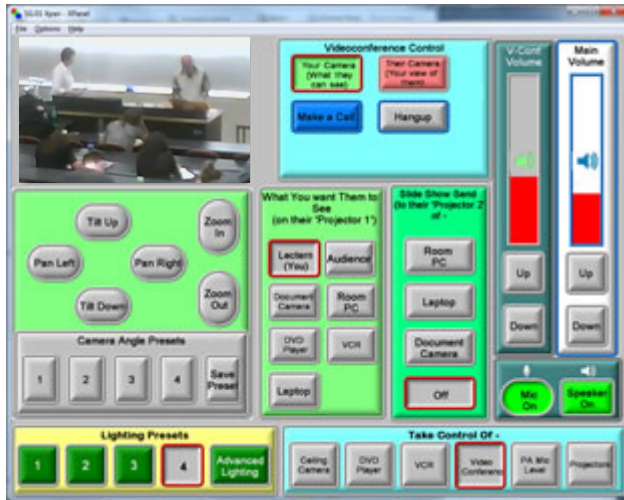


# Video Conference



## Touch Screen

To find video conferencing, Take Control of— Video Conferences, Select Your Camera. Then pick the two views you want them to see, the default is, lecturer and room PC.

## Key Points to check

Video conferencing has a few key points to consider when things go wrong:

- Audio—All Green lights? Volume at 50% or more? Microphone turned on? The other end has not muted you?
- Their view—Do they have their projectors on? Do they have near and far views selected? Do you have Lectern (projector1) & Room PC (projector2) selected? Is your end okay?
- Your view—switch from the green 'your camera' view, to the pink 'their camera' view. Try pan or tilt, does the camera view change?
- Call failure—Call the Hotline 6066 to be reconnected.