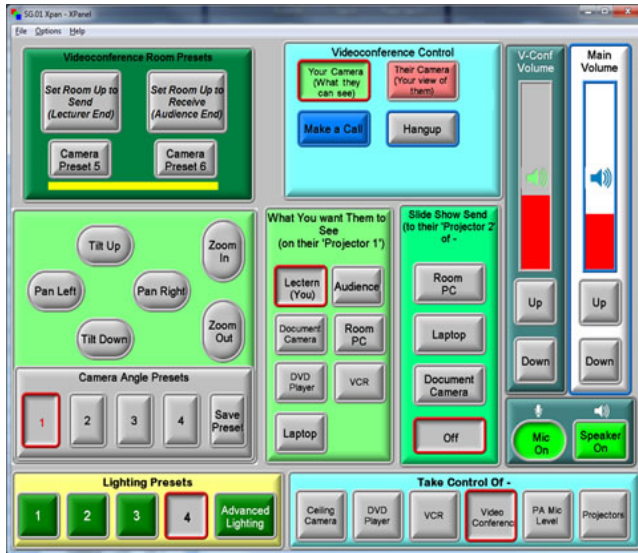


Audio Visual Control Interfaces



In the Touch panel, every button within Take Control Of gives more options This represents the physical panel. Note the buttons

You and Them (Video Conference)

This allows you to view remote or video conferencing locations, so you can see them and it allows you to actively participate and respond to each other. One view will generally be set to YOU (what the remote students will see) and one will be set to THEM (your view of the remote students). At the lectern you will see within your line of sight either TVs, LCDs or Projection screens so you can set your views.

If you need support call the Hotline on 6066